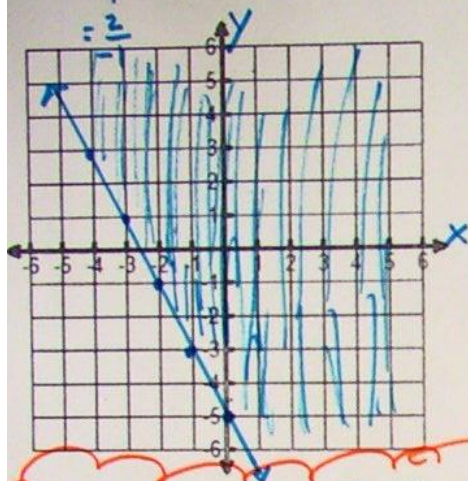


Notes: [4-4] Linear Inequalities in Two Variables

1) $y \geq -2x - 5$

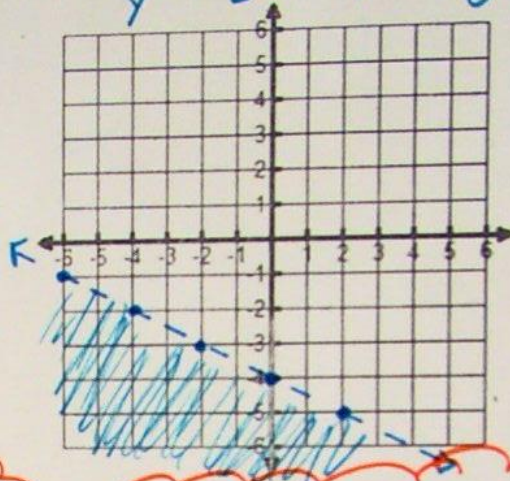
$m = -\frac{2}{1}$ $b = -5$
 $= -2$



IF \geq or $>$, Shade ABOVE
 IF \leq or $<$, Shade BELOW

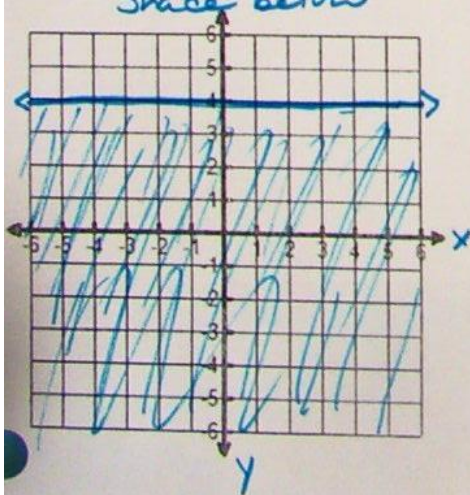
2) $-8 - 2y > x$ (You MUST solve for y in terms of x.)

$-2y > x + 8$ $m = -\frac{1}{2}$
 $y < -\frac{1}{2}x + -4$ $b = -4$



IF \geq or \leq : Solid Line
 IF $>$ or $<$: Dashed Line

3) $y \leq 4$ Horizontal Line
 Solid (b/c it could be =)
 Shade below



4) $x > -6$ Vertical Line
 Dashed (Not equal to)

