

Combined Transformations

A combined transformation is just a series of two or more transformations performed on the same figure.

EXAMPLES of Double Transformations

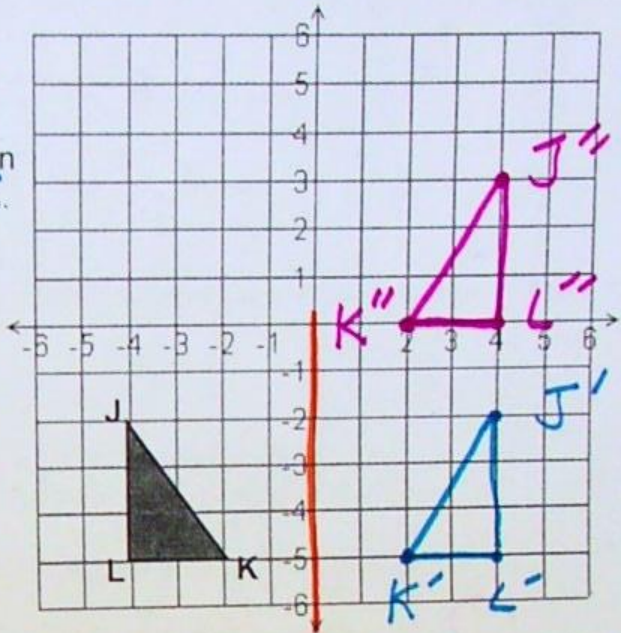
1. Using triangle JKL, find each point of reflection over the y-axis and then a translation up 5 units.

$$J(-4, -2) \quad J'(4, -2) \quad J''(4, 3)$$

$$K(-2, -5) \quad K'(2, -5) \quad K''(2, 0)$$

$$L(-4, -5) \quad L'(4, -5) \quad L''(4, 0)$$

Draw triangle J'K'L' and J''K''L''



2. Using figure PQR, find each point for a rotation 180° about the origin and a translation right 5 units and up 1 unit.

$$P(1, 1) \quad P'(-1, -1) \quad P''(4, 0)$$

$$Q(2, 5) \quad Q'(-2, -5) \quad Q''(3, -4)$$

$$R(3, 1) \quad R'(-3, -1) \quad R''(2, 0)$$

Draw triangle P'Q'R' and P''Q''R''

