

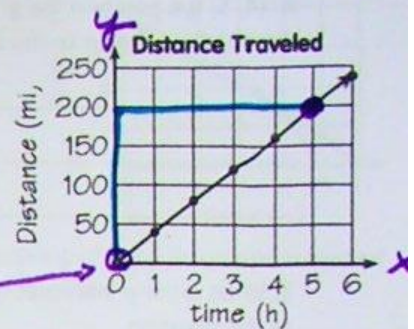
Application of Slope-Intercept Form

Name: _____

1. Distance Travelled

a. (5, 200) is a point on the graph. Explain the meaning of the point in context to the situation.

In 5 hours, 200 miles were traveled.



b. What is the y-intercept of the graph? (0,0) Explain the meaning of the y-intercept in context to the situation.

At the start, 0 miles were traveled

$$\frac{200-0}{5-0} = \frac{200}{5} = 40$$

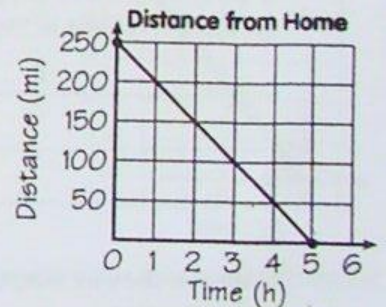
c. What is the slope of the graph? 40 Explain the meaning of the slope in context to the situation.

The rate is 40 miles per hour (mph)

d. Write an equation for the line in slope-intercept form. $y = 40x + 0$
 $y = 40x$

2. Distance from Home

a. (3, 100) is a point on the graph. Explain the meaning of the point in context to the situation.



b. What is the y-intercept of the graph? 250 or (0,250) Explain the meaning of the y-intercept in context to the situation.

c. What is the slope of the graph? _____ Explain the meaning of the slope in context to the situation.

d. Write an equation for the line in slope-intercept form. _____